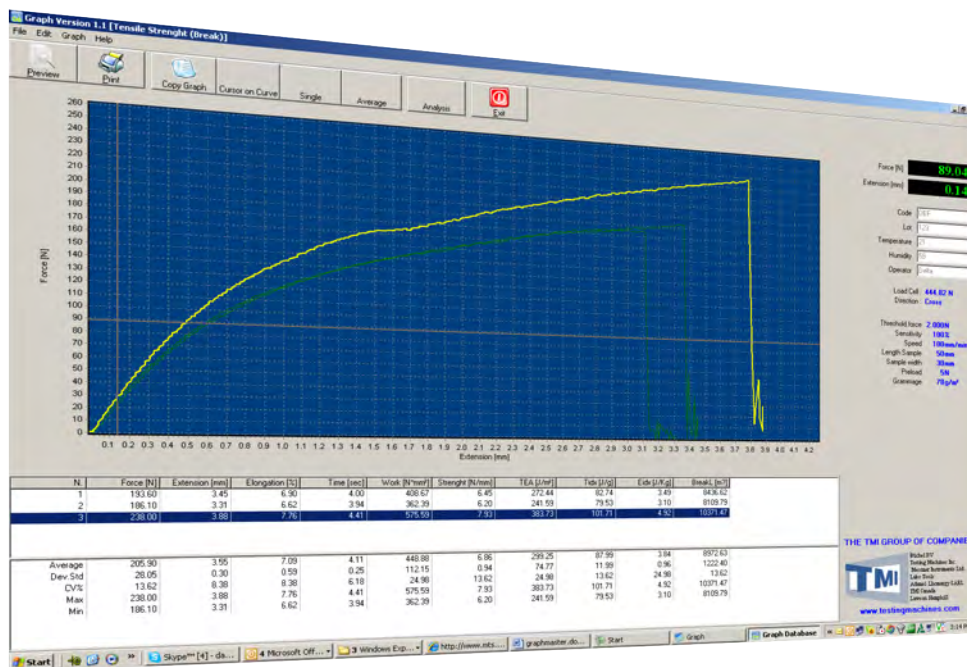


GraphMaster™



Capture test results and curve data and transfer directly to Excel®, Access® or Clipboard



KEY FEATURES

- Displays real-time test curve for visual analysis
- Selection of test results based on Industry Standards
- Preview and print sample parameters, calculated results, test curves and statistics
- Easy transfer of pertinent information to other application programs for advanced analysis
- Displays single, multiple and average test curves for a series of measurements
- Automatically saves test curve and result information

TESTING MACHINES INC.

OVERVIEW

GraphMaster™ is a curve analysis and data storage program developed by the TMI Group for evaluating materials strength such as tensile, compression, peel, burst and bending resistance. The software automatically captures and reports force, pressure, position, bending angle or time during a testing sequence based on the output of the interfaced instrument. Test result information is immediately displayed allowing the operator to quickly review, evaluate selected results and save test curves. A library of calculations is available to report commonly used test results based on industry or international standards.

FEATURES

- One click on the Database feature allows the operator to select a favorite format to save critical test information using Microsoft® compatible programs such as Clipboard, Excel®, Access® or other standard file types.
- An intuitive Peel Test program reports maximum, minimum and average force results meeting a full spectrum of international peel test standards
- Standard tensile strength tests can be carried out on a variety of samples such as Paper, Film/Foil Seals, Tissue Paper, Fibers, Nonwovens and other low force materials
- GraphMaster™ software includes a language database which allows a selection of languages; additional languages can be easily added by request.
- GraphMaster™ software was developed to work with a family of testing instruments developed by the TMI Group including:

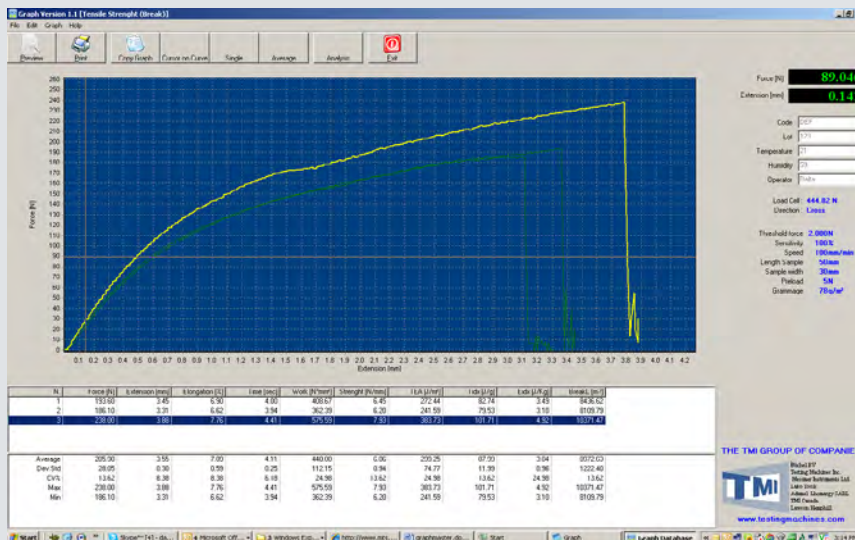
Model 84-76 Tensile/Peel Tester

Model 13-60 Burst Tester

Model 17-60 Crush Tester

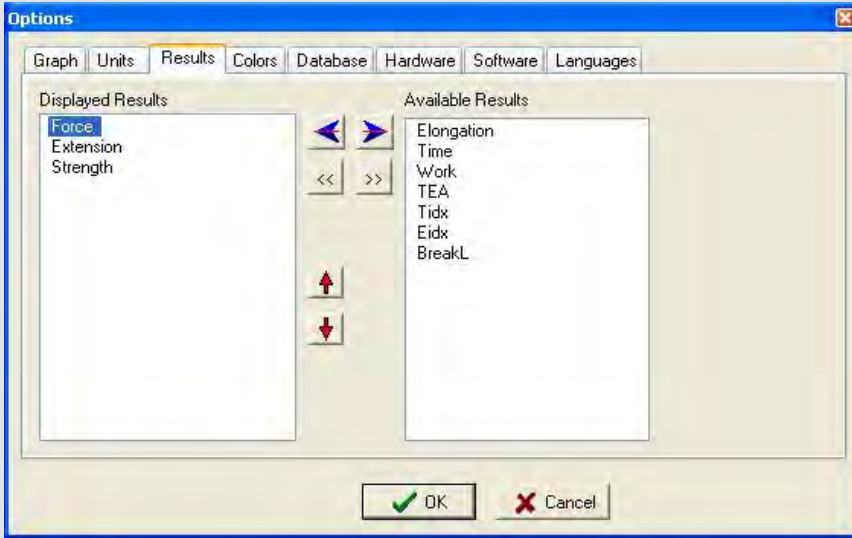
Model 17-76 Crush Tester

Model 79-25 Bending Resistance and Stiffness Tester



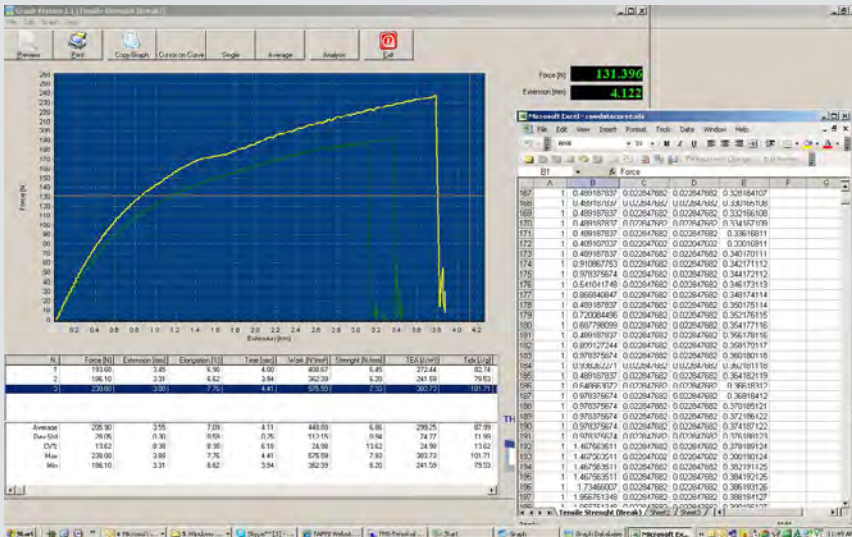
VIEW TEST CURVE IN REAL-TIME

GraphMaster Software provides a real-time display of the force/position curve. Advanced data acquisition functionality quickly provides test result information for immediate review and storage.



AVAILABLE RESULTS MENU

GraphMaster provides a selection of test results based on Industry Standards. Customize your test screen and reports to meet your individual requirements.



QUICKLY EXPORT TEST PROFILES AND RESULTS TO EXCEL

Advanced software functionality provides seamless transfer of test result and raw data information including Force, Position, Elongation and Time directly to Excel for additional data manipulation and analysis.

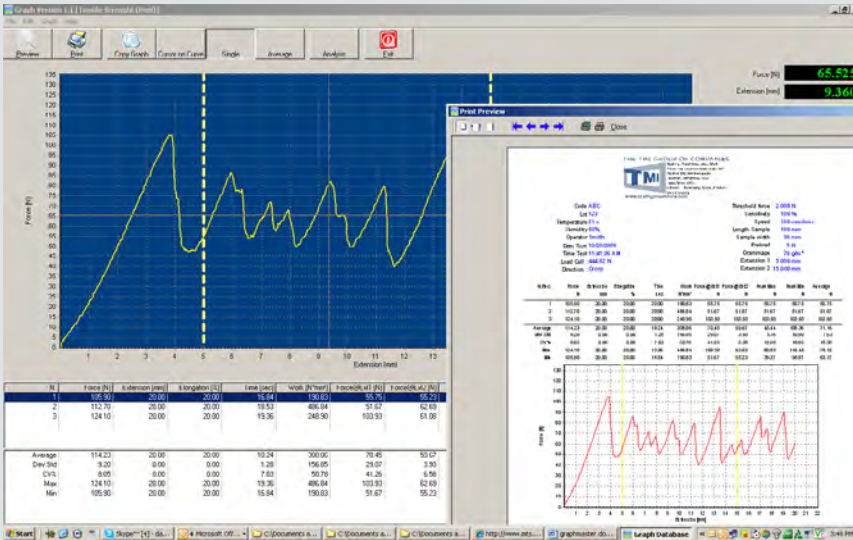
| Date | Machine | Temp (°C) | Force (N) | Extension (mm) | Elongation (%) | Work (J/m²) | Strength (N/mm²) | TEA (mm) | Tidx (mm) | Eidx (mm) | BreakL (mm) |
|------------------------|-----------|-----------|-----------|----------------|----------------|-------------|------------------|----------|-----------|-----------|-------------|
| 11/03/2009 11:41:46 AM | Machine 1 | 21.0 | 114.02 | 30.00 | 13.81 | 30.00 | 13.81 | 18.28 | | | |
| 11/03/2009 11:51:51 AM | Machine 1 | 22.0 | 38.67 | 120.00 | 126.00 | 126.00 | 126.00 | 24.95 | | | |
| 11/03/2009 12:02:20 AM | Machine 1 | 22.0 | 69.90 | 14.00 | 70.00 | 70.00 | 70.00 | 6.25 | | | |
| 11/03/2009 12:23:30 AM | Machine 2 | 22.0 | 72.20 | 14.00 | 70.00 | 70.00 | 70.00 | 6.25 | | | |
| 11/03/2009 12:28:19 PM | Machine 2 | 22.0 | 64.20 | 16.00 | 70.00 | 70.00 | 70.00 | 6.25 | | | |

DATABASE CAPABILITIES AUTOMATICALLY STORE PERTINENT TEST DATA

Test information is easily saved and recalled using an advanced built-in database feature. A flexible database package allows you to create 5 user defined fields. Additional saved information includes date, time, selected test results and instrument test parameters which are all conveniently available for later recall and analysis.

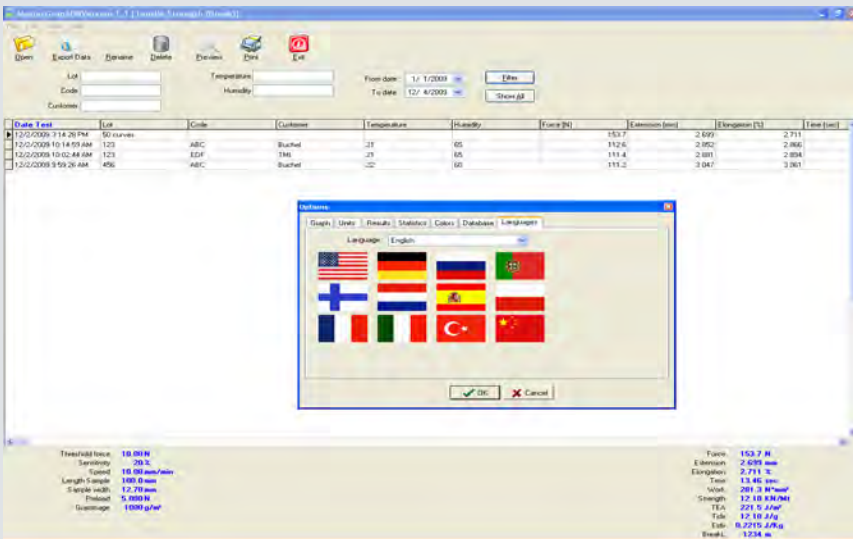
SIMPLICITY IN GENERATING TEST REPORTS

GraphMaster test reports include single and multiple test curves, sample information and statistics. Previously saved operator and test information can be recalled and previewed for review and printout.



GRAPHMASTER AVAILABLE IN LANGUAGES

Dedicated to meeting the needs of the global community, GraphMaster is available in 12 languages. Additional languages can easily be added based on a translate procedure supporting Unicode.



PC Requirements:

Intel Pentium® P-IV 3Ghz or better (or equivalent alternative i.e. AMD™)

100 Mb free hard disk space, 9-pin RS-232 serial port or USB port with a USB to Serial converter (optional)

Supports –Windows 2000®, XP®, Vista® and 7®

Testing Machines Inc.
40 McCullough Drive
New Castle, DE 19720
Tel: (302) 613-5600
Fax: (302) 613-5619
Info@testingmachines.com

Büchel BV
t/a Messmer Büchel
Fokkerstraat 24, 3905 KV
Veenendaal, Netherlands
Tel: +31 (0)318 521500
Fax: +31 (0)318 540358

Lako Tool and
Manufacturing Inc.
7400 Ponderosa Road
Perrysburg, Ohio 43052
Tel: (419) 662-5256
Fax: (419) 662-8225

Lawson Hemphill
1658 G A R Highway
Swansea, MA 02777
Tel: (508) 679-5364
Fax: (508) 679-5396
Information@
lawsonhemphill.com

Adamel Lhomargy SARL
Z.A. de l'Habitat,
Bâtiment 6
Route d'Ozoir, 77680
Roissy en Brie, France
Tel: +33 (0) 1 64402910
Fax: +33 (0) 1 64409211

TMI Canada
40 McCullough Drive
New Castle, DE 19720
Tel: (302) 613-5600
Fax: (302) 613-5619
canada@testingmachines.com



www.testingmachines.com

www.lakotool.com

www.lawsonhemphill.com